



# Richmond Education and Enterprise Campus Schools

In June 2014, the Department for Education gave conditional approval for the Richmond upon Thames College Free School Trust to establish a new school for 11 to 16 year-olds on the site of the College, opening in September 2017. The School will be co-educational, non-selective and non-faith based and admit five forms of entry (150 children) per year. Richmond upon Thames College, Harlequins, Haymarket, Waldegrave School, Achieving for Children and Richmond Council are all subscribing members of the Free School Trust.

The new school, to be called **The Richmond upon Thames School (RTS)**, will link directly to the College for its Sixth Form and the curriculum offer in the two institutions will be closely aligned. This will allow for the close planning of transition from school to college and for joint curriculum development and associated training.

**Clarendon School** is the Richmond upon Thames Local Authority day special school for pupils with complex learning difficulties. The school is currently located in Hampton and has 100 pupils. A brand new, purpose built building will provide facilities and teaching spaces specifically designed for the particular needs of the School's cohort, including those with autism. The new building will accommodate 115 Key Stage 3 and 4 pupils. Being co-located on the Campus with a mainstream secondary school and the College will provide opportunities for inclusion for students to and from each setting, and improved transition arrangements post-16. A Twickenham location will also allow far better access to transport links for the School's students.

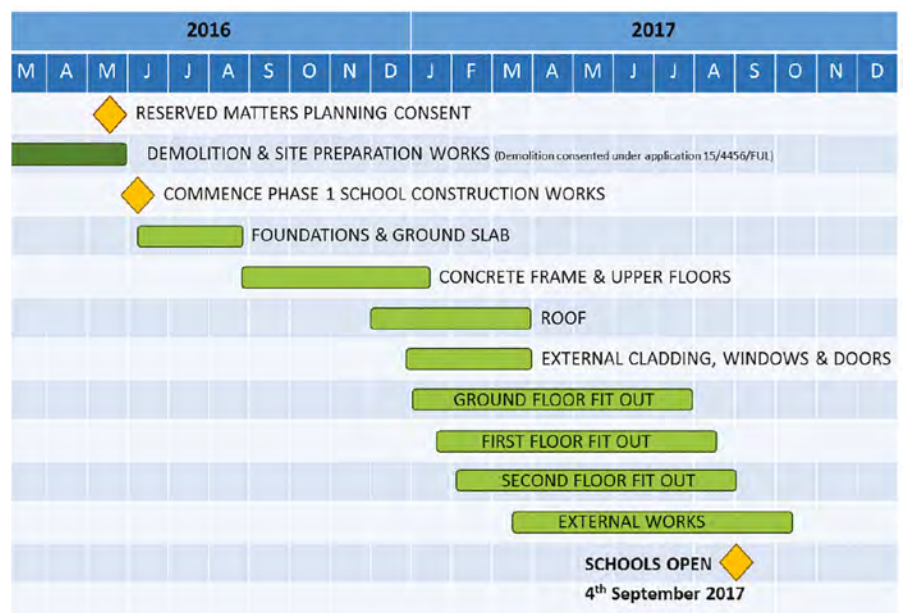
Both schools will be located in a single building and fully integrated with the wider Campus to provide students with seamless access to outstanding new facilities and expertise.

## Timeline

The schools are scheduled to open on the new site in September 2017. Before construction works can commence, the development will require planning permission. An Outline Planning Application (OPA) is currently in its determination stage. Should consent be granted for the OPA, a Reserved Matters Application (the subject of this consultation) will be submitted and subject to the approval of planning permission and any conditions, works will commence in June 2016. The programme below provides an indicative timeline for the phase 1 school construction works. Following the College's phase 1 building project further external works and the construction of a new sports building will commence (the latter being subject of a further Reserved Matters Planning Application in the future).



## Schools – Draft Phase 1 Construction Programme





# Schools building proposals

## REEC SCHOOLS – BUILDING PROPOSALS

### Building Organisation

Based on the Education Funding Agency exemplar designs, the proposed Schools are arranged around a central 'heart' space, combining dining and social areas. This forms the communal central focus point for the Schools and creates a welcoming entrance space to building.

Teaching spaces wrap around this central zone, with departmental staff bases and offices dispersed throughout, ensuring easy access from teaching spaces and supporting passive supervision. Toilets are grouped centrally for efficient servicing and easy access for all building users.

Central location of halls within the floor plan allows teaching spaces to be located around the building perimeter with access to natural light and views out.



### Elevational Treatment

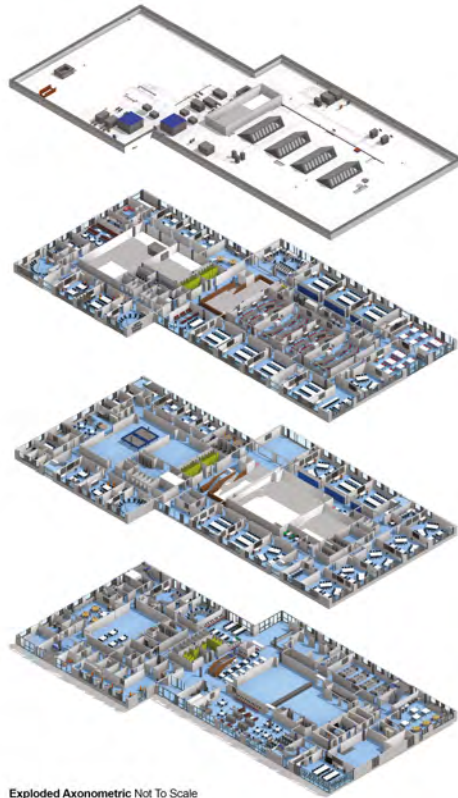
The daylight levels that need to be achieved within the teaching spaces define the required window area. Cill and head heights are defined by internal uses and daylight penetration.

\*Proposals are subject to change following feedback from pre-application engagement with the Local Planning Authority and public consultation exercise.





# Schools building proposals



Exploded Axonometric Not To Scale



### Material Palette

Brick is extensively used in Richmond, and is proposed for the primary cladding material for the schools. This will either be constructed using a traditional brick or a Corium, a modern method of construction that can reduce construction time and waste. In each case the external appearance will be identical.

A blend of dark grey/dark blue/black bricks has been selected to create a calm confident counterpoint to the proposed adjacent college building.

Cementitious cladding is proposed as an infill material.

Polyester Powder Coated aluminium are proposed for the window frames, reveals, doors, cills and copings.



West Elevation Scale 1:250



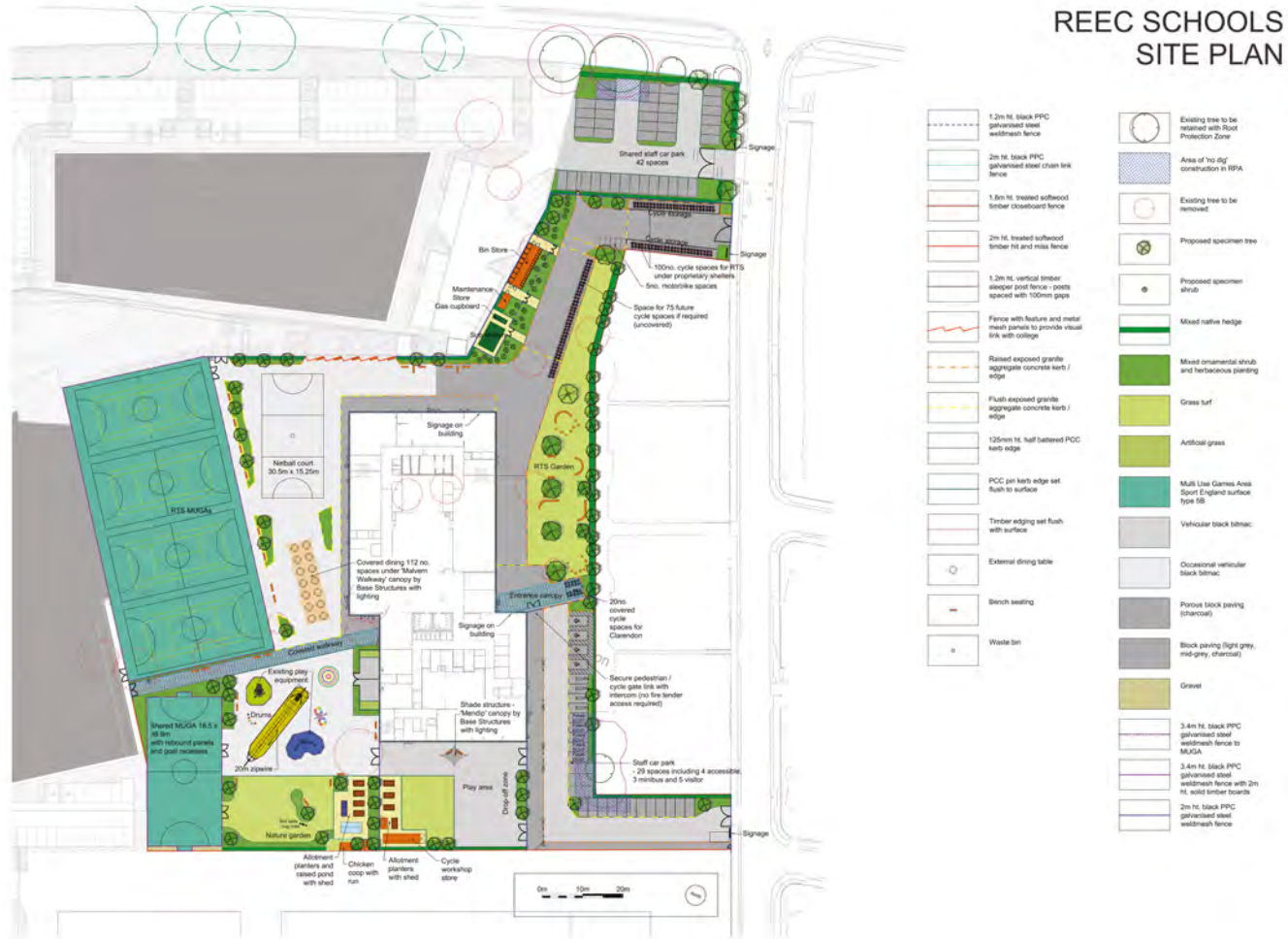
South Elevation Scale 1:250

The composition of the elevations have been developed from these constraints to:

- create hierarchy, gathering windows to form larger openings within the brickwork
- create relief to the elevation with deep reveals to window openings
- identify vertical circulation through vertical windows

\*Proposals are subject to change following feedback from pre-application engagement with the Local Planning Authority and public consultation exercise.

# Schools site plan and landscape



\*Proposals are subject to change following feedback from pre-application engagement with the Local Planning Authority and public consultation exercise.





# Schools - landscape proposals

## External space and features

The approach to the school from the main pedestrian access is framed by tree planting, with covered entrance, reflective of indicative proposals for the College, supporting clear wayfinding. An educational space is provided to the east of the main entrance plaza in the form of a series of garden spaces, with seating.

A large playground wraps around the north, west and south of the building, with covered outdoor dining space, play equipment, seating and two outdoor classroom spaces. The MUGAs lie against the western boundary, maximising the space for play, with walkway linking to off-site sports facilities. Garden space includes allotment planters, pond and greenhouse.

Ancillary structures, including bin store, substation, gas meters and maintenance shed situated to the side of the main pedestrian approach, to avoid encroaching into any direct lines of sight.



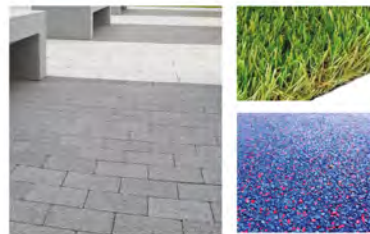
Parking: to north: staff car park and cycle storage



Parking: to south: visitors, accessible and minibus and staff parking

## REEC SCHOOLS – LANDSCAPE PROPOSALS

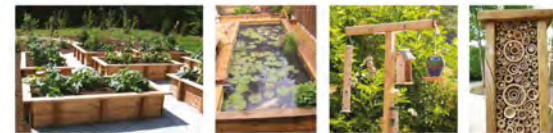
### Materials, plants, furniture and enclosure



Surfacing: shades of grey paving with feature patterning to complement the building; safety surfaces and artificial grass in playgrounds



Planting: Native tree and hedge planting to boundaries. Lime green, silver grey and purple palette within the scheme to provide splashes of colour to complement the dark materials of the building



\*Proposals are subject to change following feedback from pre-application engagement with the Local Planning Authority and public consultation exercise.